



# MONTHLY MEMBERSHIP PROGRESS REPORT

District 23 C

Results as of: 2/28/2015

GMT: ED LECIUS

LOCATION CONNECTICUT

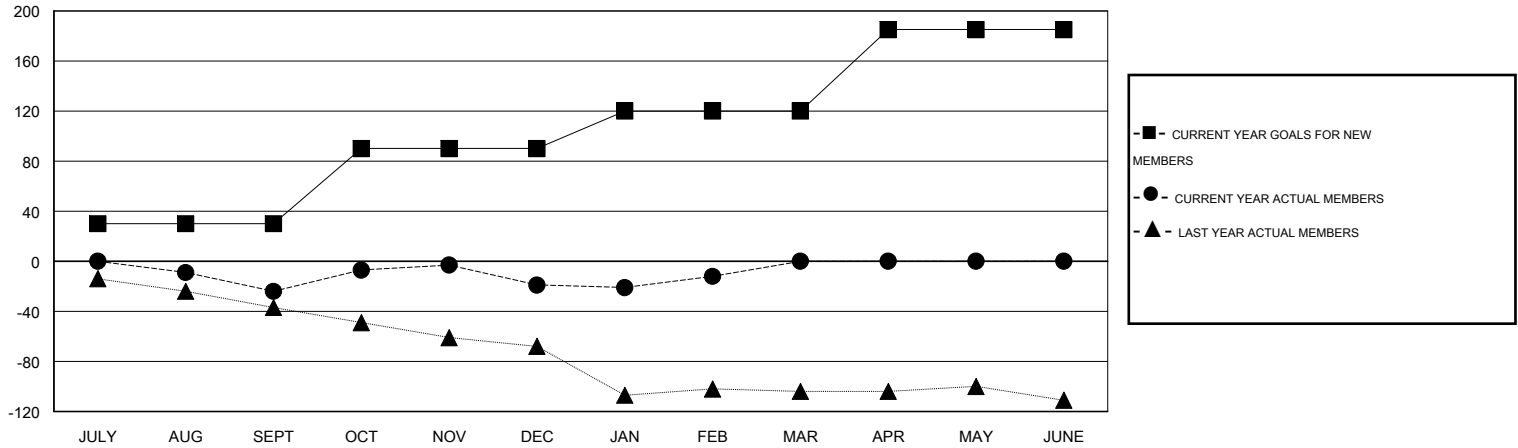
GMT CA 1

Clubs					Members				
RESULTS FOR 2014-2015					RESULTS FOR 2014-2015				
QUARTER	NEW CLUB GOAL	NEW CLUBS	DROPPED CLUBS	NET GAIN/LOSS	QUARTER	NEW MEMBER GOAL	CHARTER AND NEW MEMBERS ADDED	DROPPED MEMBERS	NET GAIN/LOSS
JULY/AUG/SEPT	0	0	0	0	JULY/AUG/SEPT	30	24	48	-24
OCT/NOV/DEC	1	0	1	-1	OCT/NOV/DEC	60	61	56	5
JAN/FEB/MAR	0	0	0	0	JAN/FEB/MAR	30	26	19	7
APR/MAY/JUNE	1	0	0	0	APR/MAY/JUNE	65	0	0	0

GOALS AND ACTUAL NEW CLUBS CUMULATIVE



GOALS AND ACTUAL MEMBERS CUMULATIVE



DROPPED CLUBS: 1	34 CLUBS OF 53 ADDED 1 OR MORE NEW MEMBERS	<u>GENDER DISTRIBUTION</u>	
		MALE	1,167 (65.75%)
<u>DROPPED MEMBERS</u>	<a href="#">CLICK HERE FOR HEALTH ASSESSMENT DATA</a>	FEMALE	608 (34.25%)
DECEASED		15	FAMILY UNIT MEMBERS
CLUB CANCELLED	0	HEAD OF HOUSEHOLD	161
OTHER	108	NON-HEAD OF HOUSEHOLD	172
<b>TOTAL</b>	<b>123</b>		